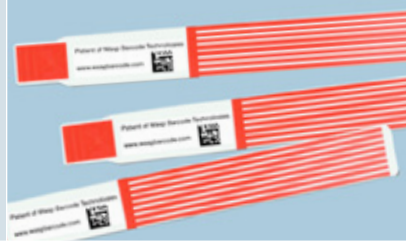


WHC25

BARCODE PRINTER



Productivity Solutions for Small Businesses

The WHC25 direct thermal desktop printer creates secure, long-lasting wristbands for applications such as healthcare patient ID tracking and entertainment ticketing. Text, graphics, and barcodes are printed directly on the wristband, increasing accuracy and eliminating the need for manual, handwritten or stick-on labels.

Featuring a compact footprint, the WHC25 supports 6.5-inch outside diameter wristband rolls, easily reducing frequent media replacement while maximizing workplace efficiency. The WHC25's 8 MB SDRAM and 4 MB Flash ensures quick wristband print speeds up to 5 inches per second, while the 32-bit RISC processor allows for faster throughput and higher levels of productivity. The wall mountable, clamshell design provides an easy-to-use spring loaded, center based wristband holder for quick and easy media loading.

Utilizing a LCD screen, the WHC25 clearly displays the printer's status and makes it easy to troubleshoot away from a PC. For a standalone printing station, it can optionally be configured to print wristbands should your computer go down by simply plugging a keyboard into the printer. The WHC25 provides flexible connectivity options, including internal Ethernet and USB, and supports WPL, ZPL emulation, and EPL emulation.

■ WASP WHC25 FEATURES

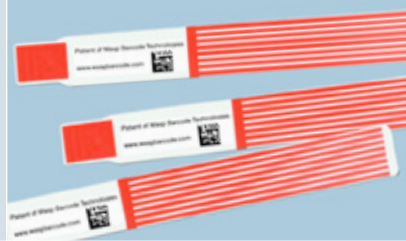
- ▶ Direct thermal print technology
- ▶ Print wristbands up to 2.05 inches wide
- ▶ Print speed up to 5 inches per second
- ▶ 203 dpi print resolution
- ▶ 8 MB SDRAM, 4 MB Flash
- ▶ MicroSD slot allows for Flash memory expansion up to 4 GB
- ▶ 32-bit RISC processor
- ▶ WPL, ZPL emulation, and EPL emulation
- ▶ Supports 6.5-inch outside diameter media roll
- ▶ Internal Ethernet and USB connectivity
- ▶ Front LCD display
- ▶ Optional downtime keyboard interface

■ STANDARD FEATURES

- ▶ Desktop wristband printer ideal for patient identification, hospitality, and event ticketing
- ▶ Small, compact footprint designed for space-constrained environments
- ▶ 8 MB SRDAM and 4 MB Flash ensures quick wristband print speed
- ▶ 32-bit RISC processor allows for faster throughput and higher levels of productivity

WHC25

BARCODE PRINTER



Productivity Solutions for Small Businesses

■ SPECIFICATIONS

STANDARD FEATURES	Printing method	Direct thermal
	Resolution	203 dpi (8 dots / mm)
	Print speed	Up to 5 in. per second
	Maximum print width	2.05 in. (52 mm)
	Maximum print length	90 in. (2,286 mm)
	Standard memory	8 MB SDRAM, 4 MB Flash
	Memory expansion	MicroSD memory expansion slot for use with Flash memory up to 4 GB
	Sensors	Label gap, black line, head open
	Cabinet	Double-walled ABS plastic
	Operation panel	One power switch, one feed button, one LED (three color)
	Dimensions	10.24 in. L x 4.29 in. W x 8.27 in. H (260 mm L x 109 mm W x 210 mm H)
Net weight	2.7 lbs (1.2 kg)	
Command set	WPL, ZPL emulation, EPL emulation	
OPERATIONAL CHARACTERISTICS	Communication interfaces	Internal Ethernet, USB 2.0
	Operating temperature	41°F to 104°F (5°C to 40°C)
	Storage temperature	-40°F to 140°F (-40°C to 60°C)
	Certifications	FCC Class B, CE Class B, C-Tick Class B, UL, CUL, TUV/Safety, CCC
MEDIA	Media width	0.59 in. to 2.05 in. (15 mm to 52 mm)
	Media diameter (max.)	6.5 in. OD (165 mm) with 1 in. or 1.5 in. core
	Ribbon length (max.)	n/a
FONTS, GRAPHICS SYMBOLOGIES	Barcode symbologies	1D Barcodes: Code 39, Code 93, Code 128 UCC, Code 128 subsets A.B.C, Codabar, Interleave 2 of 5, EAN-8, EAN-13, EAN-128, UPC-A, UPC-E, EAN and UPC 2 (5) digits add-on, MSI, PLESSEY, POSTNET, China POST, GS1 DataBar, Code11 2D Barcodes: PDF-417, Maxicode, DataMatrix, QR code, Aztec
	Resident fonts	8 alpha-numeric bitmap fonts, 1 Monotype Image® CG Triumvirate Bold Condensed scalable font
	Font rotation	0°, 90°, 180°, 270°
PART NUMBERS	633808403911	WHC25 Desktop Barcode Printer